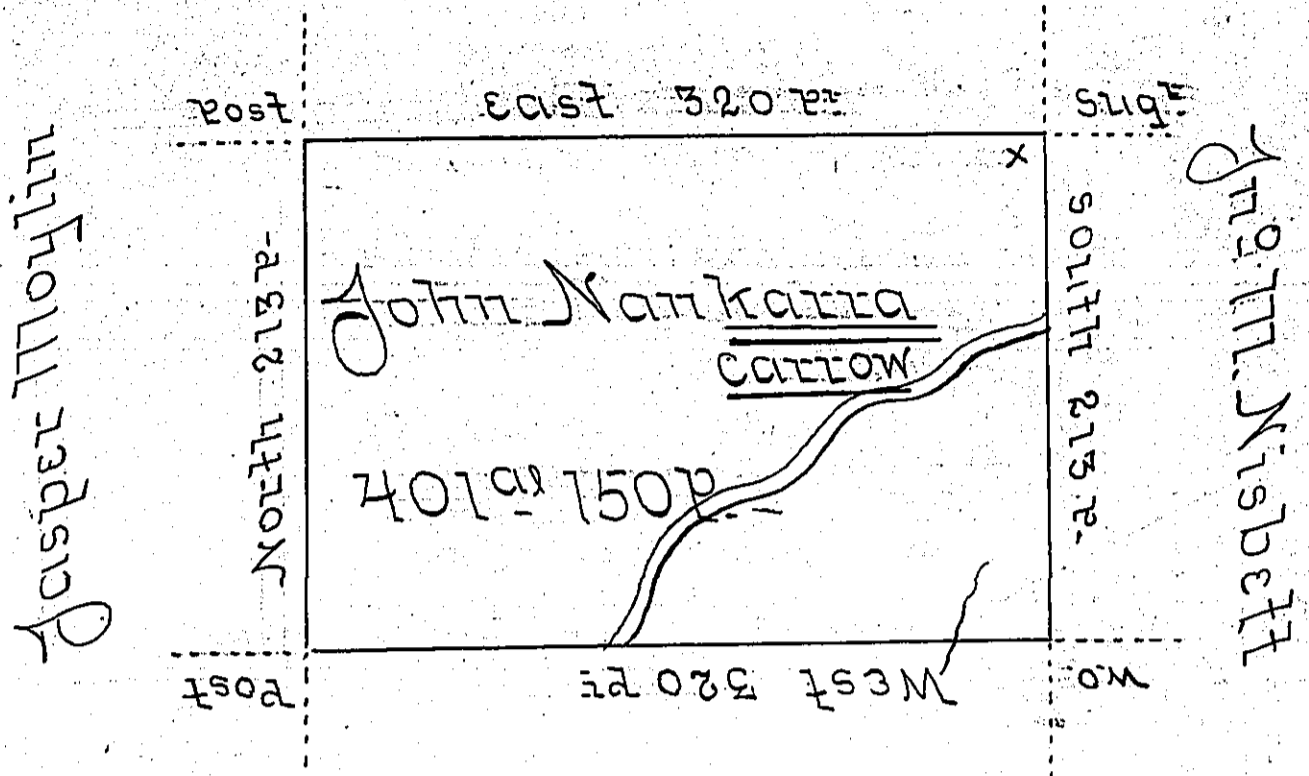


Philip Nicklin



Benjamin Morgan

Situate on the West side of French Creek in Allegheny County containing 401 Acres & 150 p^e and Allowance of six per Cent for Roads &c. Surveyed the 3^d day of June 1795 in pursuance of a Warrant dated the 30th of May 1792

Wm Power D^{ce}

To Daniel Brodhead Esq^r
Surveyor General

IN TESTIMONY that the above is a copy of the original remaining on file in the Department of Internal Affairs of Pennsylvania, made conformably to an Act of Assembly approved the 16th day of February, 1833, I have hereunto set my Hand and caused the Seal of said Department to be affixed at Harrisburg, this ninth day of July 1906.

George P. Brown
Secretary of Internal Affairs.